

Ceiling Systems

Range Overview

Systems for concealed & exposed ceilings



Your build, made easy



Your build, made easy

Trumark Group is the new name you need to remember when you want an extensive range of lining, cladding and construction supplies, matched with a first-class customer service team who are easy to work with.

Serving customers for over 70 years, we were previously known as the Building Materials division of Atkar Group.

Our new name represents a new chapter for our customers. With our team of experienced professionals, our focus is on understanding the individual needs of your build to help shorten your construction journey so you can build quicker, easier & more efficiently.

**With Trumark Group,
it's your build, made easy.**

CONTENTS

Range Overview	4
V200 Concealed Ceiling System	6
A200 Concealed Ceiling System	8
B200 Concealed Ceiling System	10
SlimCeil Concealed Ceiling System	12
GT Ultimate Exposed Ceiling Grid	14

Ceiling System Overview

Trumark Group offer a range of concealed and exposed grid systems that are engineered and manufactured to comply with all relevant Australian standards and codes and have been designed to suit a variety of different ceiling applications.

Use the table below to help you find the right ceiling system for your requirements or call Trumark Group's technical support team who are experienced in ceiling systems and are available to help you select the best system for your requirements. We can also custom engineer solutions to meet certain project requirements.

V200



A200



Description	Concealed system with 67mm wide furring channel	Concealed system with 28mm furring channel
Size	Furring channel width: 67mm Furring channel height: 28mm	Furring channel width: 37mm Furring channel height: 28mm
Applications	Soffits, perforated plasterboard, suspended and direct fix ceilings	Suspended ceiling subframe for internal linings or soffit linings
Concealed Grid	✓	✓
Exposed Grid		
Drop in Tile		
Perforated Plasterboard	✓	✓
Flush Plaster Ceiling	✓	✓
Expressed Joint Soffit	✓	✓
ResilMount™		✓
Confined Ceiling Space		
Long Ceiling Drops	✓	✓
Heavy Ceiling Linings	✓	✓



B200

SlimCeil

GT Ultimate Grid



Concealed system with 23mm furring channel

Furring channel width: 35mm
Furring channel height: 23mm

Suspended ceiling subframe for internal linings or soffit linings

✓

✓

✓

✓

✓

✓

Concealed system for low-clearance ceiling cavities

SlimCeil channel width: 51mm
SlimCeil channel height: 35mm

Compact ceiling cavities

✓

✓

✓

✓

✓

✓

✓

Exposed grid system for drop in tiles

24mm Face. All standard profiles - Main Tee, Cross Tees, Wall Angle

Exposed grid and tile applications

✓

✓

✓

V200 / 67mm Wide
Furring Channel
CONCEALED CEILING SYSTEM

Industry first multi-purpose furring channel that offers fast and functional installation.

The V200 concealed system is a complete suspension ceiling system.



Key Features

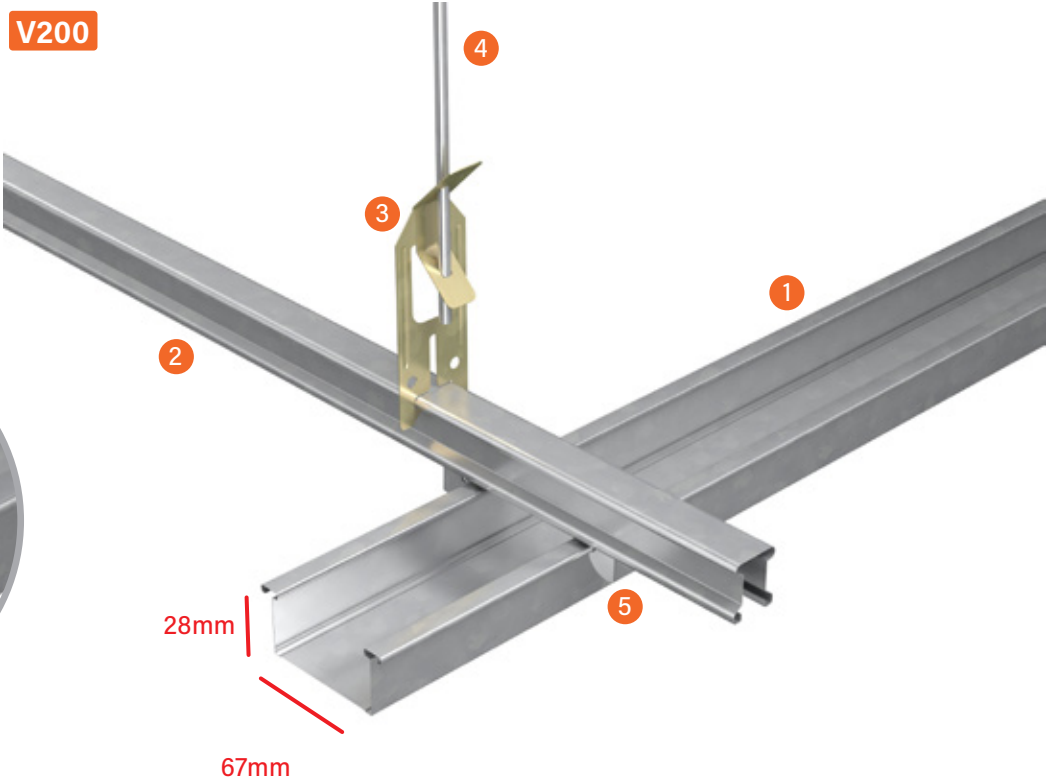
- > 67mm wide channel face for fixing
 - > No need for double furring channel on panel joins
 - > Reduces joint movement & cracking
- > Saves framing time on site
 - > Adds structural rigidity to ceiling
 - > Top cross rail can be custom curved to various radii for curved ceilings

Applications

- > Perforated Plasterboard
- > Soffits
- > Suspended Ceilings
- > Direct Fix Ceilings

System Details

- 1. 67mm Furring Channel
- 2. Primary Channel
- 3. Spring Hanger
- 4. Galvanised Rod
- 5. Locking Key Coupling



System Components

The following components are suitable for the V200 67mm wide furring channel system.



Wide Furring Channel
28mm x 67mm
Code: 4249-36 | 48 | 60
Lengths: 3600 | 4800 | 6000mm
Pack size: 4



Primary Channel
25mm - 0.75mm
Code: 3248 -36 | 48
Lengths: 3600mm | 4800mm
Pack size: 10



Perimeter Channel - 28mm
Code: 8242
Length: 3000
Pack size: 10



Direct Fixing Clip
Code: 6249S | 6249L
Lengths: 80mm | 180mm
Pack size: 50 | 100



Galvanised Rod - 5mm
Code: 1655
Lengths: 4000mm
Pack size: 40



Direct Fixing Saddle
Code: 6240
Lengths: N/A
Pack size: 100



Locking Key Coupling
Code: 5244
Lengths: 3248/3249 to 4249
Pack size: 50



Spring Hanger
Code: 2244
Length: N/A
Pack size: 250



Purlin Clip
Code: VF1
Length: N/A
Pack size: 100



Side Mount Spring Hanger
Code: 2245
Length: N/A
Pack size: 200

A200 / 28mm
Furring Channel
CONCEALED CEILING SYSTEM

Fully engineered 28mm furring channel concealed ceiling system that is flexible and secure.

The A200 easily clips together to form a suspension system that lining boards can be fixed to.



Key Features

- > Strong yet flexible system

> Manufactured from galvanised steel

> Engineered solutions available

> Easily clicks together
- > Suitable for fire-rated and non fire-rated applications

> Top cross rail can be custom curved to various radii for curved ceilings

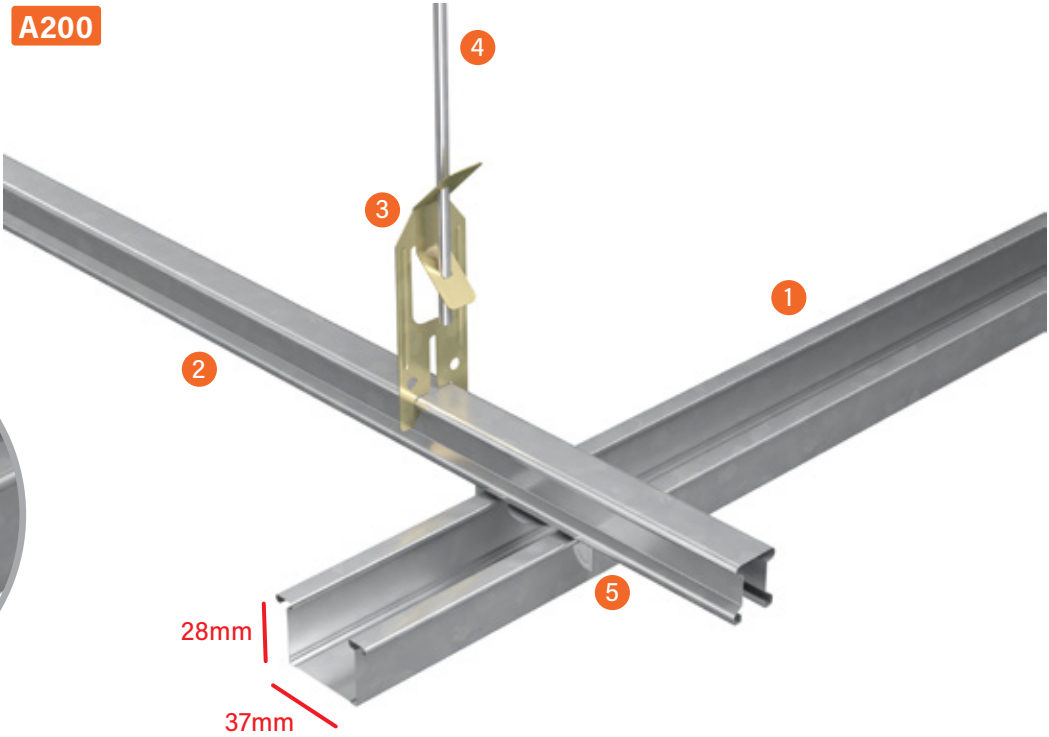
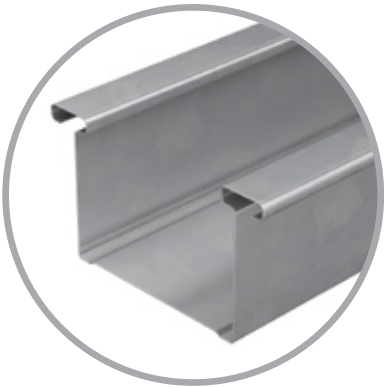
> Load rated

Applications

Suitable for use as a suspended ceiling subframe for internal linings or soffit linings or engineered for specific project requirements.

System Details

1. 28mm Furring Channel
2. Primary Channel
3. Spring Hanger
4. Galvanised Rod
5. Locking Key Coupling



System Components The following components are suitable for the A200 28mm furring channel system.



Furring Channel
28mm x 37mm
Code: 4246 - 27 | 30 | 36 | 48 | 60
Length: 2700 | 3000 | 3600 | 4800 | 6000mm
Pack size: 8



Primary Channel
25mm - 0.75mm
Code: 3248 - 36 | 48
Length: 3600 | 4800mm
Pack size: 10



Perimeter Channel - 28mm
Code: 8242
Length: 3000mm
Pack size: 10



Galvanised Rod - 5mm
Code: 1655
Length: 4000mm
Pack size 40



Spring Hanger
Code: 2244
Length: N/A
Pack size: 250



Side Mount Spring Hanger
Code: 2245
Length: N/A
Pack size: 200



Locking Key Coupling
Code: 5243
Length: N/A
Pack size: 100



Direct Fixing Clip
Code: 6243 | 6246
Length: 95mm | 190mm
Pack size: 100



Saddle
Code: 6241
Length: N/A
Pack size: 200



Saddle Adjustable
Code: 6244 | 6244L
Length: N/A
Pack size: 200



Resilient Locking Key Coupling
Code: 5243R
Length: N/A
Pack size: 50



Purlin Clip
Code: VF1
Length: N/A
Pack size: 100

B200 / 23mm Furring Channel CONCEALED CEILING SYSTEM

High caliber 23mm furring channel concealed suspended ceiling system that provides a fast, rigid and economical installation solution.

The B200 is suitable for one or two-layer applications.

trumark tip



Use our **Exposed Grid Transition Coupling** to easily convert existing exposed ceilings to flush finished plasterboard.

Key Features

- > System components all snap together

> Furring channel easily cut with tin snips

> Strong yet lightweight

> Easy to handle
- > Cost efficient and fast installation

> Bulkheads easily formed

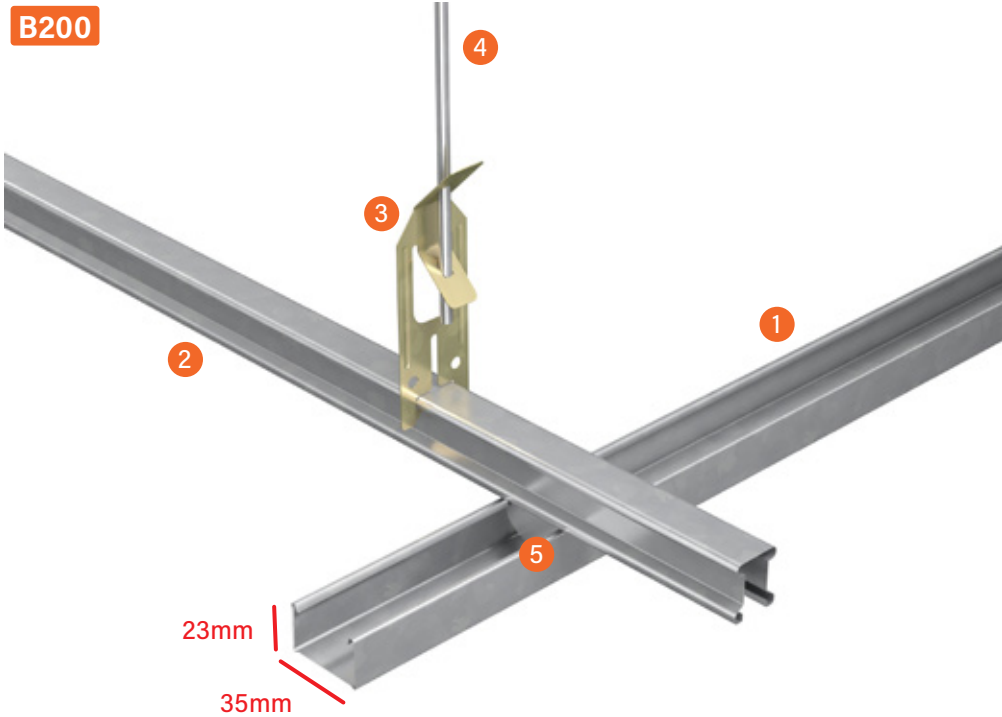
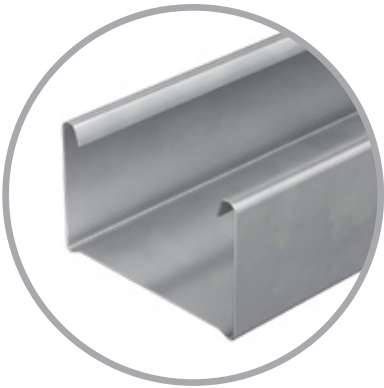
> Top cross rail can be custom curved to various radii for curved ceilings

Applications

Suitable for use as a suspended ceiling subframe for internal linings or soffit linings or for block wall battens.

System Details

1. 23mm Furring Channel
2. Primary Channel
3. Spring Hanger
4. Galvanised Rod
5. Locking Key Coupling



System Components The following components are suitable for the B200 23mm furring channel system.



Furring Channel
23mm x 35mm
Code: 4146 - 36 | 48 | 60
Length: 3600 | 4800 | 6000mm
Pack size: 12



Primary Channel
25mm x 0.75mm
Code: 3248 - 36 | 48
Length: 3600 | 4800mm
Pack size: 10



Perimeter Channel - 23mm
Code: 8141
Length: 3600mm
Pack size: 10



Galvanised Rod - 5mm
Code: 1655
Length: 4000mm
Pack size 40



Spring Hanger
Code: 2244
Length: N/A
Pack size: 250



Side Mount Spring Hanger
Code: 2245
Length: N/A
Pack size: 200



Exposed Grid Transition Coupling
Code: 5340
Length: N/A
Pack size: 100



Locking Key Coupling
Code: 5143
Length: N/A
Pack size: 100



Direct Fixing Clip
Code: 6143 | 6146
Length: 87mm | 160mm
Pack size: 100



Wall Clip
Code: 6141
Length: N/A
Pack size: 100



Saddle - 10mm Stand Off
Code: 6144
Length: N/A
Pack size: 100



Purlin Clip
Code: VF1
Length: N/A
Pack size: 100

SLIMCEILTM

LOW CLEARANCE CEILING SYSTEMS

Innovative concealed system designed for low-clearance ceiling cavity requirements.

SlimCeil is fully adjustable, cost effective and easy to install.



Key Features

- > Simple & fast installation

> Cost-effective

> No sharp edges

> Fully adjustable
- > Suitable for cavity spaces above the plasterboard between 37mm and 108mm

> High strength - no compromise to ceiling load capacities

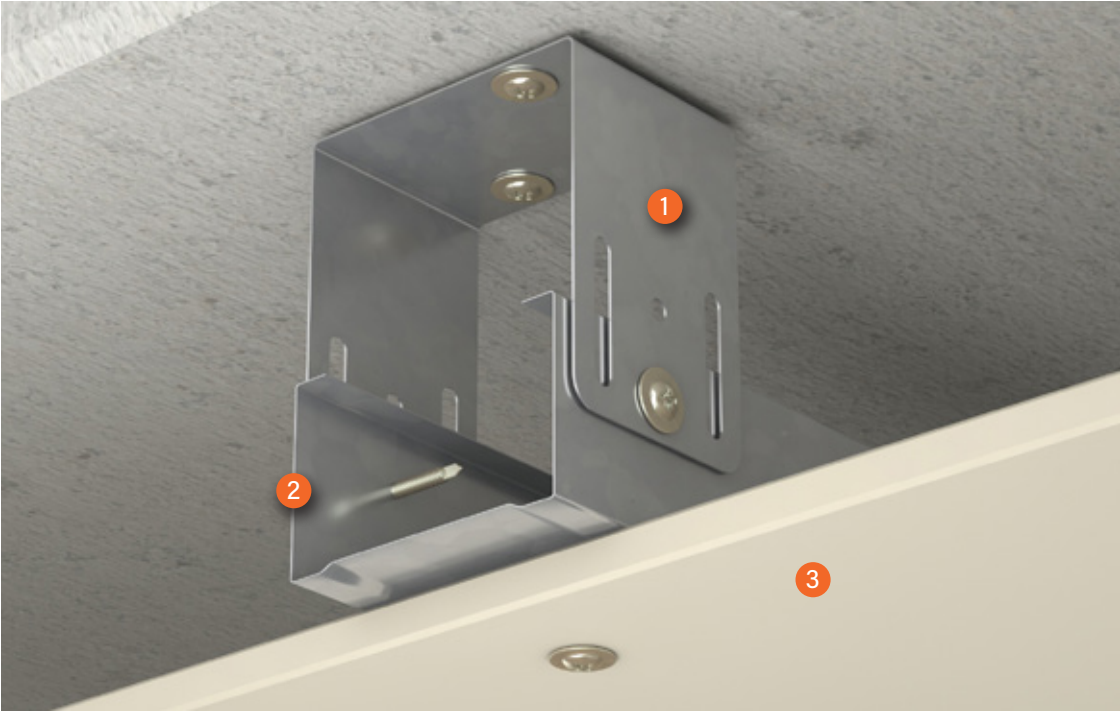
> Failsafe & large spans - positive fixing point to lock the channel in position

Applications

For use in compact ceiling cavities, where the cavity space above the plasterboard is between 37mm and 108mm or where traditional suspended ceiling systems with dropper rods and hangers are physically restricted.

System Details

1. SlimCeil Ceiling Bracket
2. SlimCeil Channel
3. Lining Board



System Components

	SlimCeil Ceiling Bracket Code: 6540 Length: 37-60mm* Pack size: 100		SlimCeil Ceiling Bracket Code: 6541 Length: 52-76mm* Pack size: 100		SlimCeil Ceiling Bracket Code: 6542 Length: 69-92mm* Pack size: 100
	SlimCeil Ceiling Bracket Code: 6543 Length: 85-108mm* Pack size: 100		SlimCeil Bracket - Resilient Code: 6540R Length: 47-70mm* Pack size: 100		SlimCeil Bracket - Resilient Code: 6541R Length: 63-86mm* Pack size: 100
	SlimCeil Bracket - Resilient Code: 6542R Length: 79-103mm* Pack size: 100		SlimCeil Bracket - Resilient Code: 6543R Length: 95-118mm* Pack size: 100		SlimCeil Channel Code: 4540-30 36 48 Length: 3000 3600 4800mm Pack size: 10

* This is the distance between the concrete substrate and the back face of the plasterboard lining.
Example: for a 75mm overall ceiling cavity using one layer of 13mm plasterboard, use part number 6541 slimline ceiling bracket (75mm - 13mm = 62mm [53~76mm]).



Innovative exposed grid ceiling system which is fast to install, high strength and fully demountable.

The GT Ultimate Grid brings visual and practical functionality together.



Key Features

- > Fire Rated

> Clean bright white colour

> High torsion/twist resistance

> European Made
- > Quick release tab system for super fast demountability

> Audible quality 'click' with connection

> Double stitched Main & Cross Tees for superior strength and stability

Applications

- > Retail Spaces

> Offices

> Healthcare

> Education
- > Apartments

> Hotels

> Shopping Centres

System Details

1. Main Tee

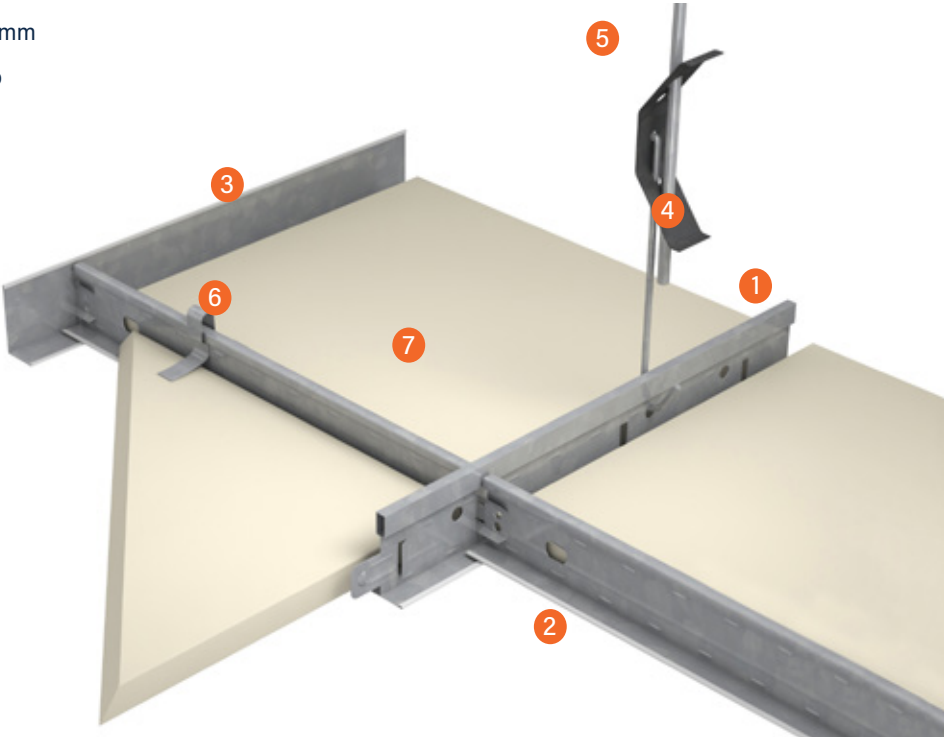
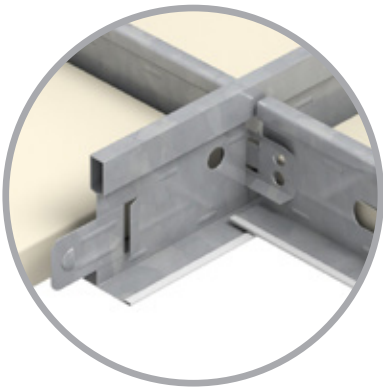
2. Cross Tee

3. Wall Angle

4. Spring Hanger
5. Galvanised Rod - 5mm

6. Tile Hold Down Clip

7. Drop In Ceiling Tile



System Components

The following components are suitable for the GT Ultimate Grid.



Wall Angle - 40mm x 20mm
Code: GT8816
Length: 3600mm
Pack size: 40



Main Tee - 38mm x 24mm
Code: GT3813
Length: 3700mm
Pack size: 24



Cross Tee - 38mm x 24mm
Code: GT4816 | GT4811
Length: 1200mm | 600mm
Pack size: 50



Ceiling Bracket Assembly
Code: 1027
Length: 25mm
Pack size: 100



Spring Hanger
Code: 2424
Length: N/A
Pack size: 500



Purlin Clip
Code: VF1
Length: N/A
Pack size: 100



Suspension Rod Bracket - Flat
Code: 1020
Length: N/A
Pack Size: 100



Suspension Rod Bracket - Right Angle
Code: 1021
Length: N/A
Pack Size: 100



Galvanised Rod - 5mm
Code: 1655
Length: 4000mm
Pack size 40



Tile Down Hold Clip
Code: 5860
Length: N/A
Pack size 100

Ceiling Tiles

- > Fine Fissured

> Vinyl Faced
- > Acoustic

> Decorative



Trumark Group is a division of Atkar Group and supply building materials to the construction industry. We specialise in internal and external wall and ceiling systems.

Head Office & Distribution Centre

50 - 52 Koornang Rd, Scoresby VIC 3179

1300 00 50 52

contact@trumarkgroup.com.au

trumarkgroup.com.au



Details are correct at time of printing. Images for reference only.
For more information, installation and technical guides,
certificates and warranties visit our website.
Copyright ©2020 Trumark Group.